

LINCOLNVILLE COMMUNITY REDEVELOPMENT AREA

STREETSCAPE SURVEY & ANALYSIS



PROJECT SCOPE

The Lincolnville Community Redevelopment Area (LCRA) currently consists of a patchwork system of pedestrian sidewalk infrastructure which, over decades of placement and repair, has become disjointed and nonconnected. Given this condition, pedestrian connectivity throughout Lincolnville lacks the ability to safely and effectively move pedestrians throughout this historic and well traveled neighborhood.

In September of 2019, in coordination with City of St. Augustine staff, Castle Bay Design Studio performed an on-site, street-by-street visual review and survey of the existing sidewalk condition within the entirety of the LCRA boundary. This review and survey primarily included documentation of existing location, width, functional condition and ADA accessibility. Additionally, Castle Bay Design Studio documented existing trees where conflicts with sidewalk infrastructure occurred, or would occur, as well as existing street lighting.

PROJECT GOALS AND APPLICATION

The ultimate goal of this Streetscape Survey & Analysis is to provide a user friendly, street-by-street accounting which graphically identifies the results of the above mentioned visual review and survey. This highly graphic and easy to comprehend approach allows for clear understanding of the existing sidewalk and lighting presence, or lack thereof, within the LCRA boundary. With this planning tool in hand, determinations on providing future sidewalk connections and/or repair to locations throughout Lincolnville become easily apparent. Ultimately, this effort yields an initial step to ensuring residents and visitors alike are provided a safer means of travel throughout this historic neighborhood.



S. Brett Kuzoian, RLA, Principal
134 Riberia Street, Suite 102
904.547.2986

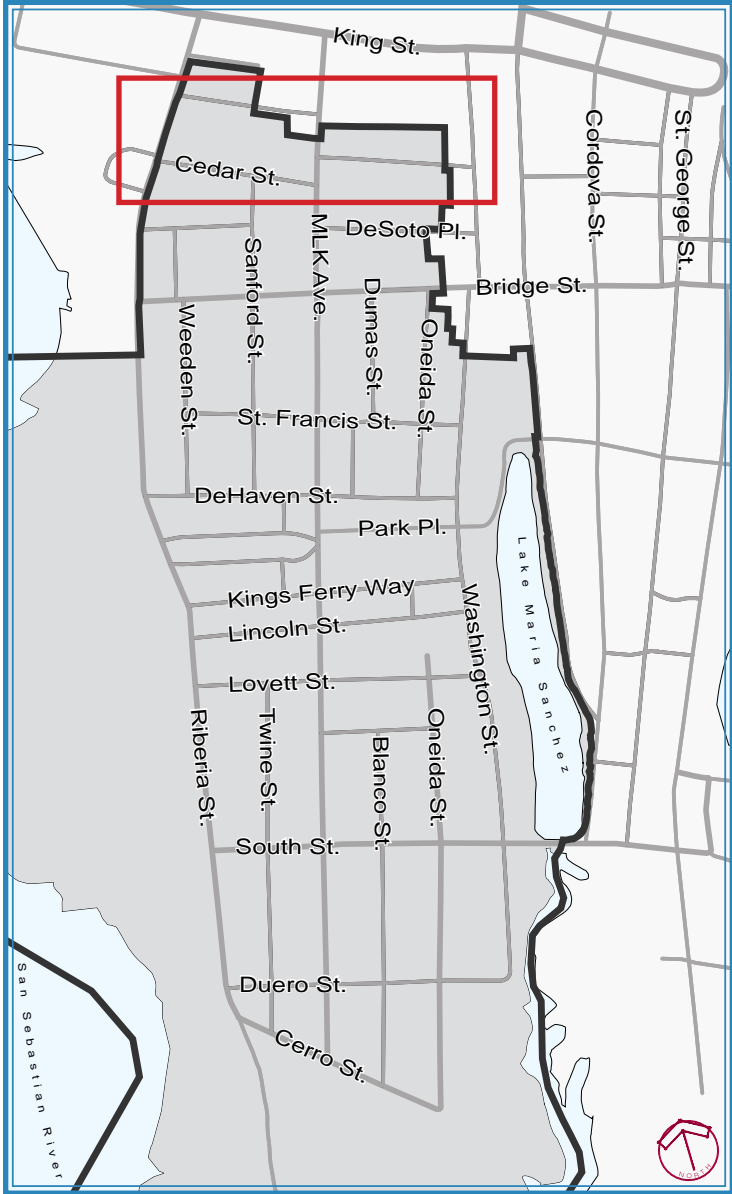


CITY OF
ST. AUGUSTINE
EST. 1565

Mark Litzinger, Financial Services Director
50 Bridge Street

King St.	PG 2 / 3
Cedar St.	PG 4 / 5
DeSoto Pl.	PG 6 / 7
Sanford St.	PG 8 / 9
MLK Ave.	PG 10 / 11
Dumas St.	PG 12 / 13
Oneida St.	PG 14 / 15
St. Francis St.	PG 16 / 17
DeHaven St.	PG 18 / 19
Park Pl.	PG 20 / 21
Kings Ferry Way	PG 22 / 23
Lincoln St.	PG 24 / 27
Lovett St.	
Riberia St.	
Twine St.	
Blanco St.	
South St.	
Duero St.	
Cerro St.	

TABLE OF CONTENTS



Previous sidewalk repair beginning to buckle/crack.



Large existing oak tree lifting/cracking sidewalk.

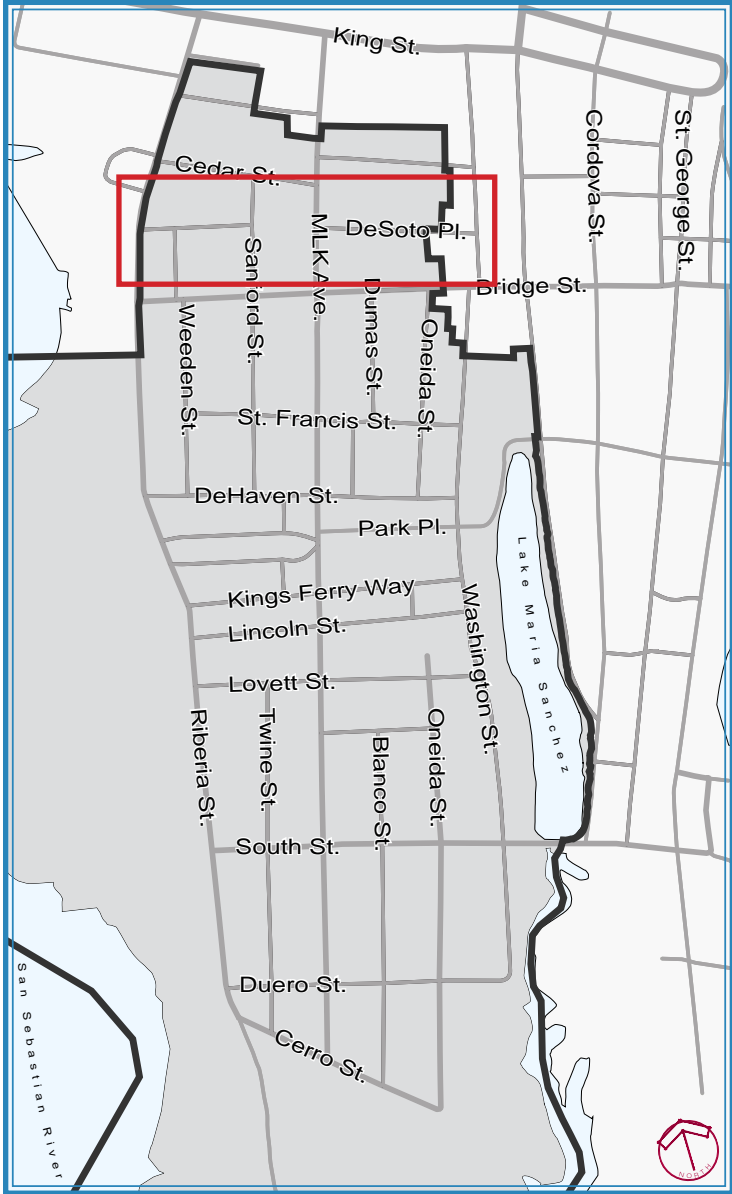
MAP KEY

- LCRA BOUNDARY
- EXISTING SIDEWALK CONDITION
 - GOOD (NEW AND / OR FREE OF CRACKS)
 - FAIR (SLIGHTLY CRACKED / DAMAGED, POTENTIALLY NON-ADA ACCESSIBLE)
 - BAD (HEAVILY CRACKED / MISSING SECTIONS, NON-ADA ACCESSIBLE)
- EXISTING SIDEWALK WIDTH (IN FEET)
 - 4'
 - 6'
- STREET LIGHT
- ONE-WAY TRAFFIC FLOW
- TREE (IN ROW / CONFLICT WITH SIDEWALK)



Good/continuous sidewalk along the north side of Cedar Street with minor obstructions.

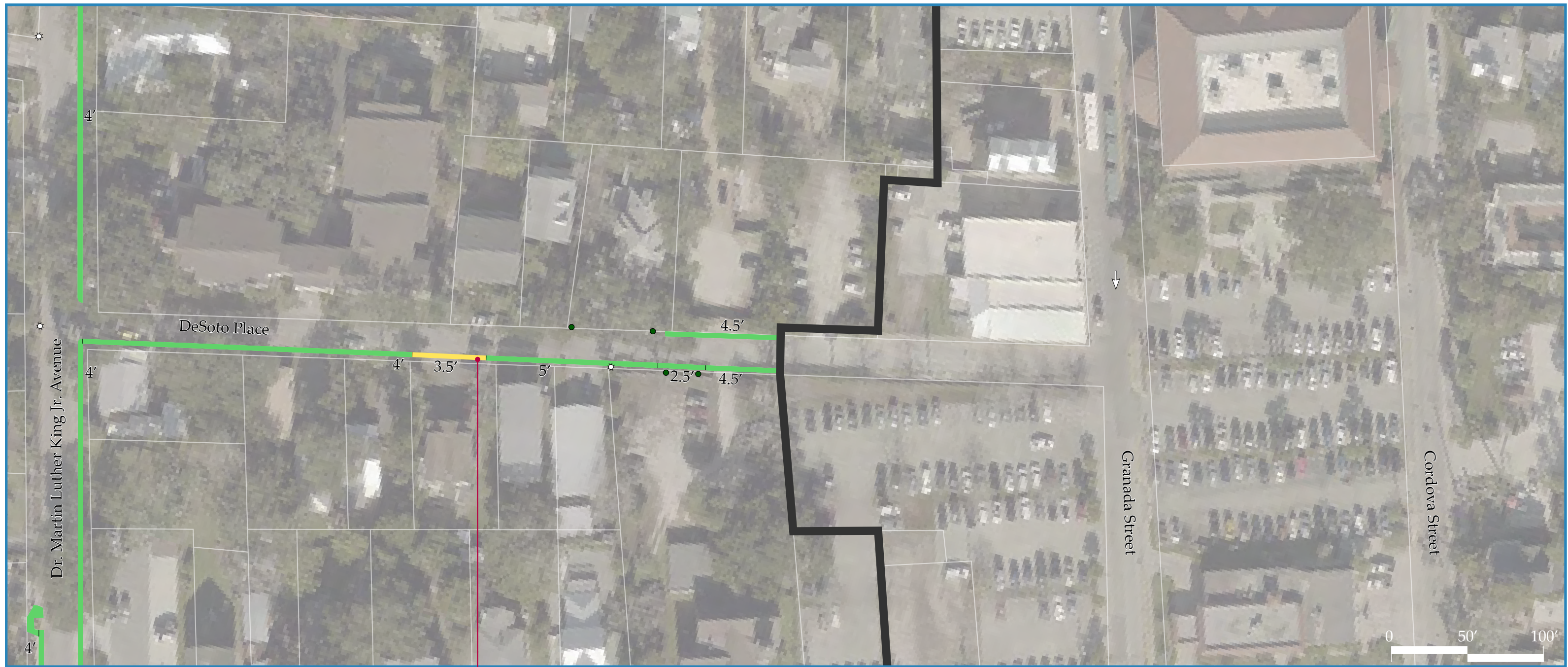




Heavily damaged sidewalk section.

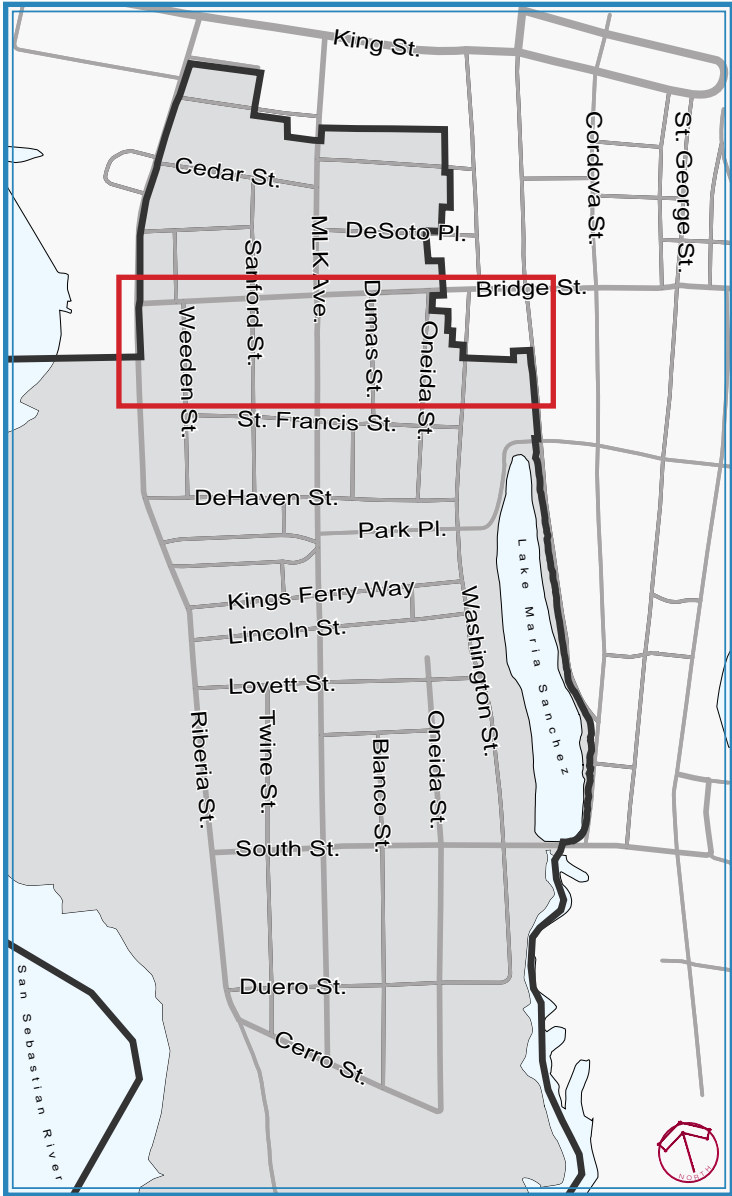
MAP KEY

- LCRA BOUNDARY
- EXISTING SIDEWALK CONDITION
 - GOOD (NEW AND / OR FREE OF CRACKS)
 - FAIR (SLIGHTLY CRACKED / DAMAGED, POTENTIALLY NON-ADA ACCESSIBLE)
 - BAD (HEAVILY CRACKED / MISSING SECTIONS, NON-ADA ACCESSIBLE)
- EXISTING SIDEWALK WIDTH (IN FEET)
 - 4'
 - 6'
- STREET LIGHT
- ONE-WAY TRAFFIC FLOW
- TREE (IN ROW / CONFLICT WITH SIDEWALK)









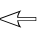

Utility poles within sidewalk/
damaged driveway apron.

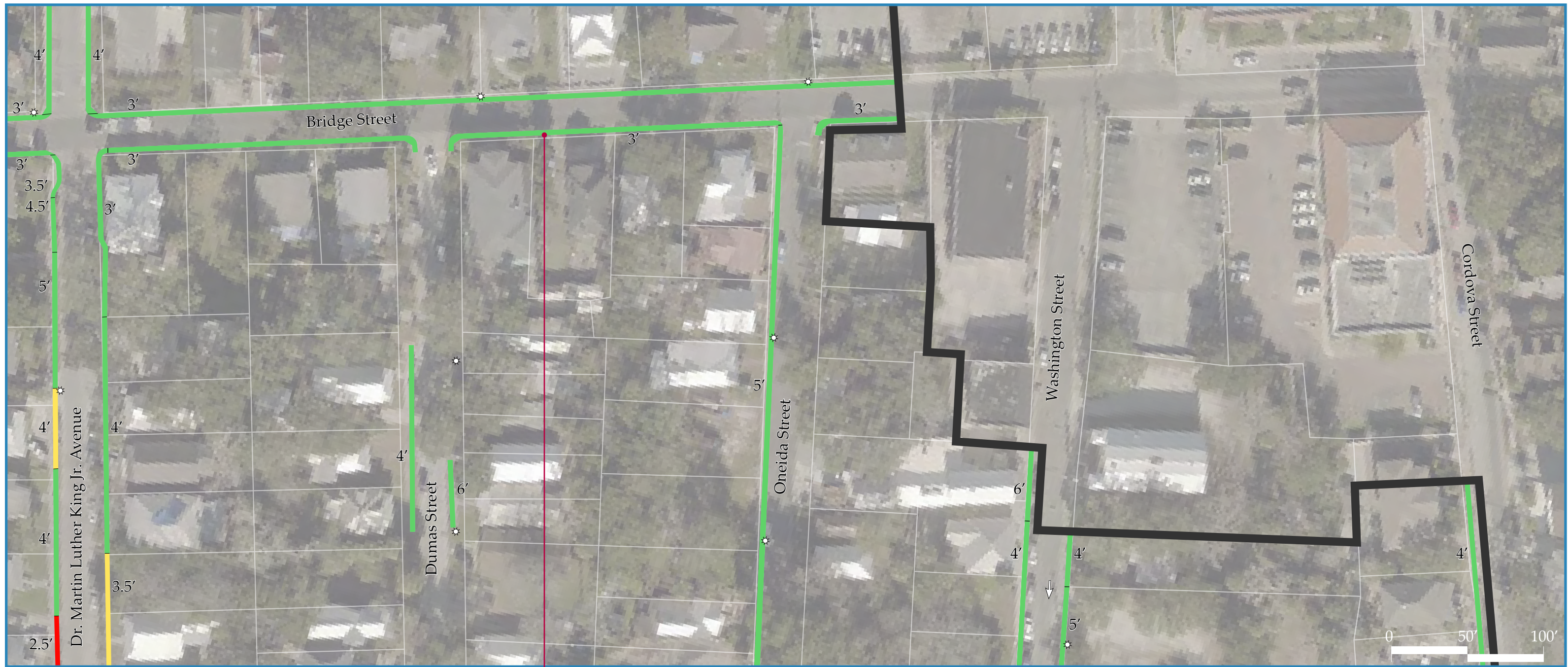




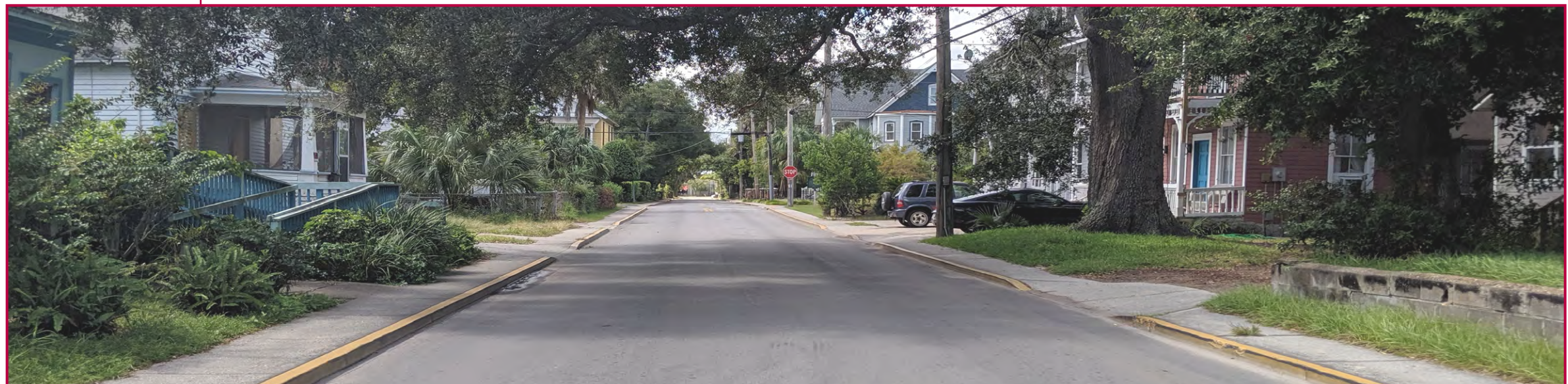
Large existing cedar trees obstructing potential sidewalk section.

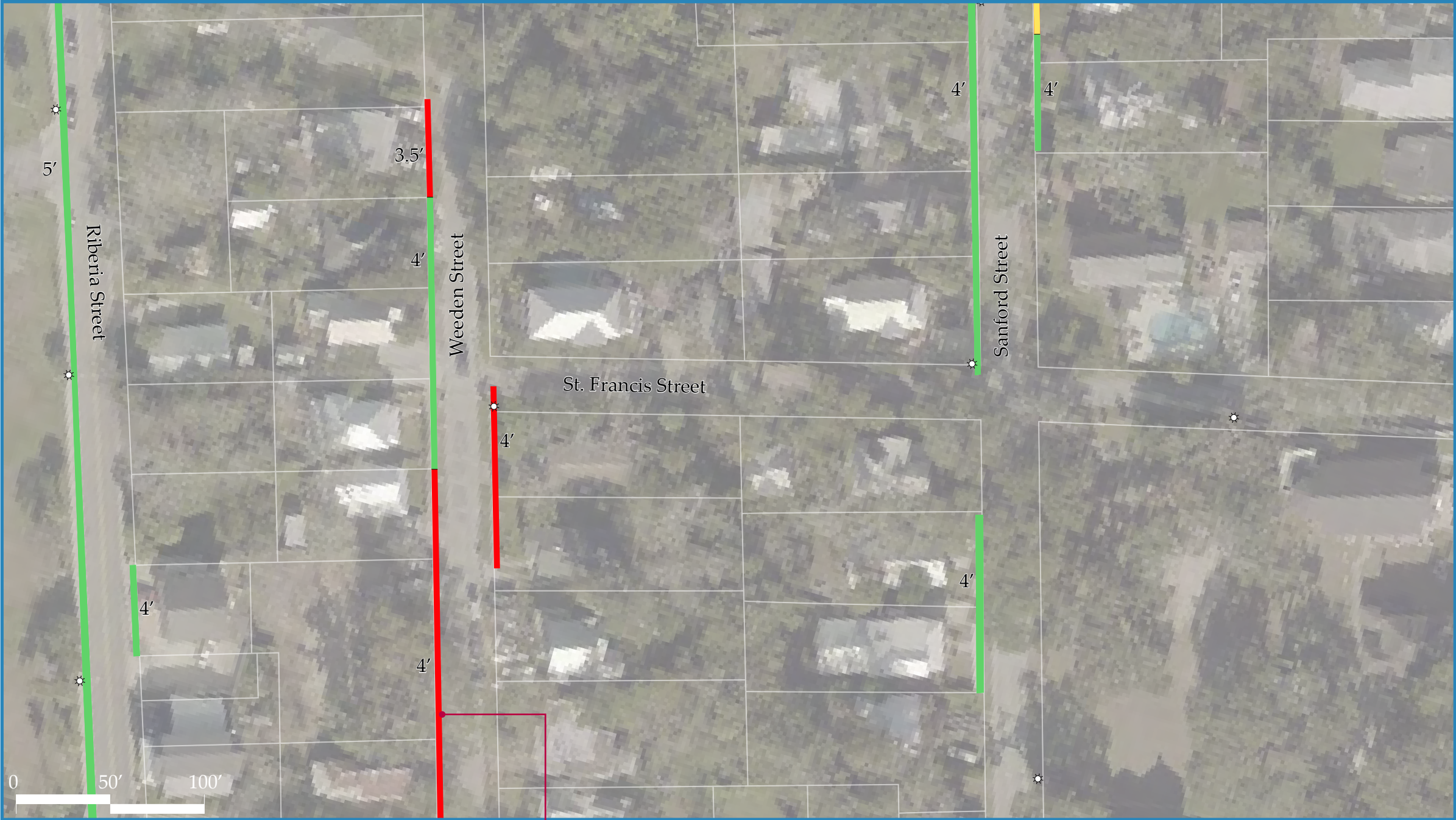
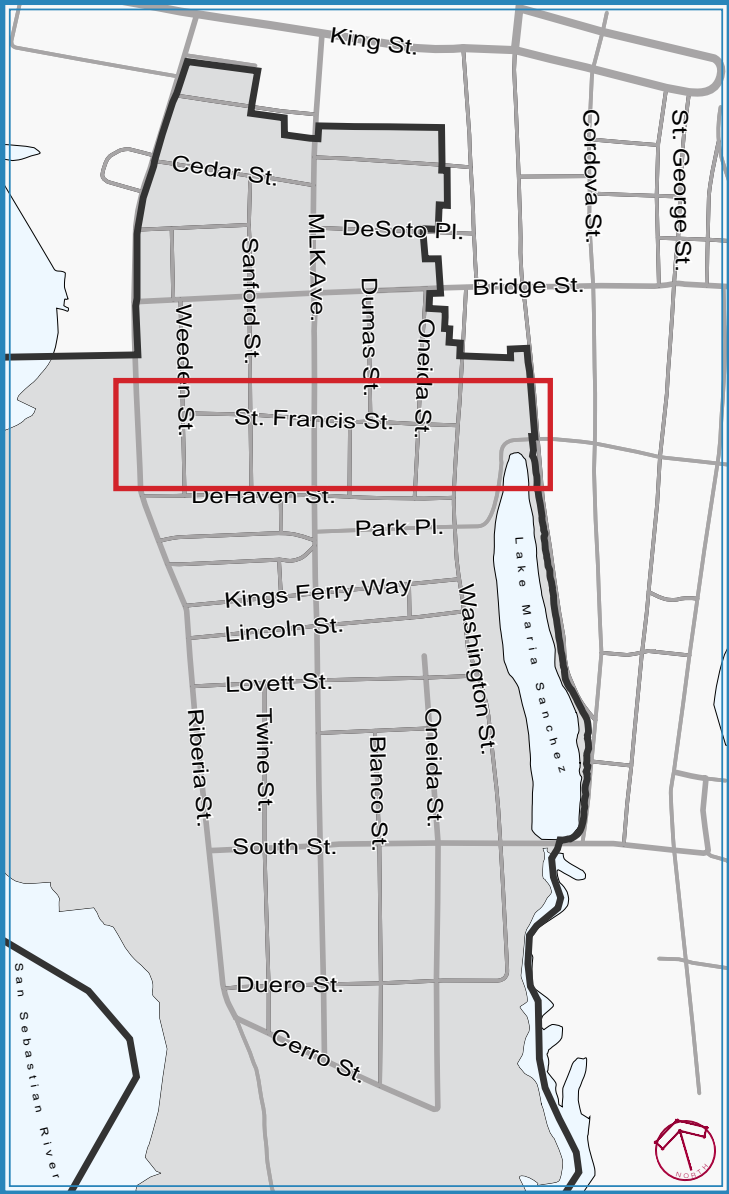
MAP KEY

-  LCRA BOUNDARY
- EXISTING SIDEWALK CONDITION
 -  GOOD (NEW AND / OR FREE OF CRACKS)
 -  FAIR (SLIGHTLY CRACKED / DAMAGED, POTENTIALLY NON-ADA ACCESSIBLE)
 -  BAD (HEAVILY CRACKED / MISSING SECTIONS, NON-ADA ACCESSIBLE)
- EXISTING SIDEWALK WIDTH (IN FEET)
 - 
-  STREET LIGHT
-  ONE-WAY TRAFFIC FLOW
-  TREE (IN ROW / CONFLICT WITH SIDEWALK)



Good/continuous sidewalk along both sides of Bridge Street with no obstructions.





Existing tree lifting sidewalk with significant damage.

MAP KEY

LCRA BOUNDARY

EXISTING SIDEWALK CONDITION

GOOD (NEW AND / OR FREE OF CRACKS)

FAIR (SLIGHTLY CRACKED / DAMAGED, POTENTIALLY NON-ADA ACCESSIBLE)

BAD (HEAVILY CRACKED / MISSING SECTIONS, NON-ADA ACCESSIBLE)

EXISTING SIDEWALK WIDTH (IN FEET)

4' 6'

STREET LIGHT

ONE-WAY TRAFFIC FLOW

TREE (IN ROW / CONFLICT WITH SIDEWALK)

8 | CASTLE BAY DESIGN + STUDIO

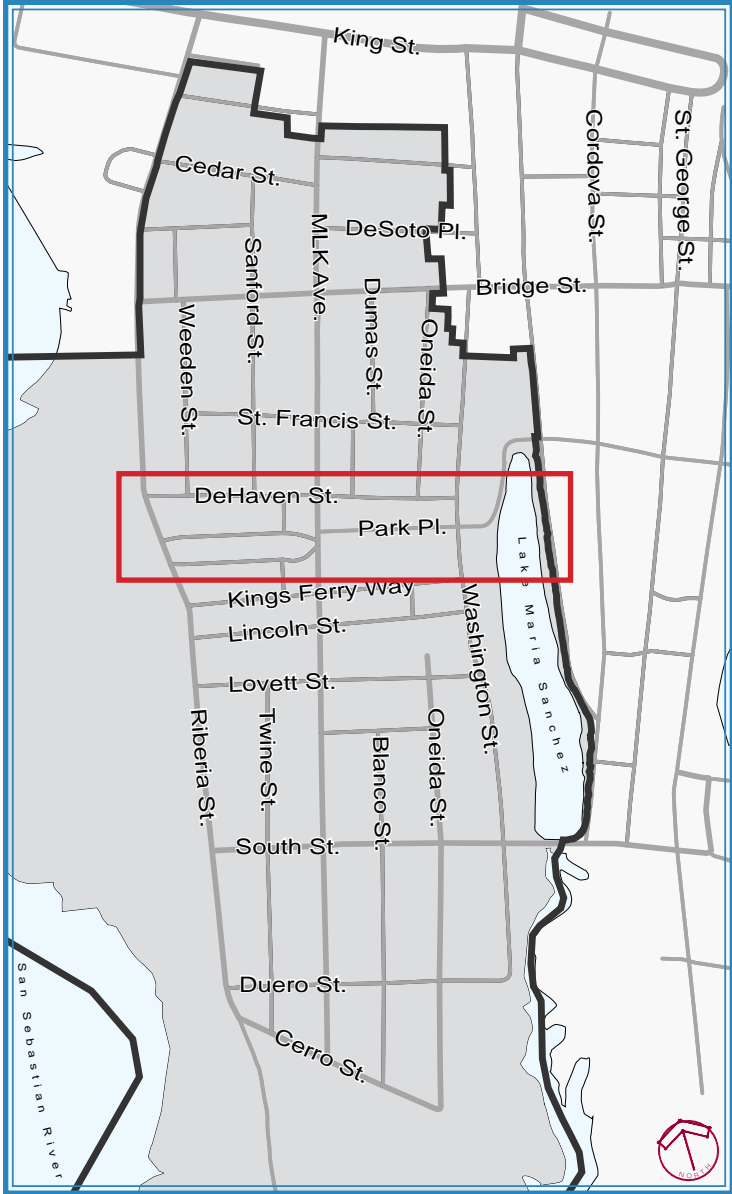


Multiple utility poles within sidewalk.



Sidewalk is in good condition. Existing trees beginning to lift sidewalk.





MAP KEY

- LCRA BOUNDARY
- EXISTING SIDEWALK CONDITION
 - GOOD (NEW AND / OR FREE OF CRACKS)
 - FAIR (SLIGHTLY CRACKED / DAMAGED, POTENTIALLY NON-ADA ACCESSIBLE)
 - BAD (HEAVILY CRACKED / MISSING SECTIONS, NON-ADA ACCESSIBLE)
- EXISTING SIDEWALK WIDTH (IN FEET)
 - 4'
 - 6'
- STREET LIGHT
- ONE-WAY TRAFFIC FLOW
- TREE (IN ROW / CONFLICT WITH SIDEWALK)



Large existing oak trees would be in conflict with future construction.

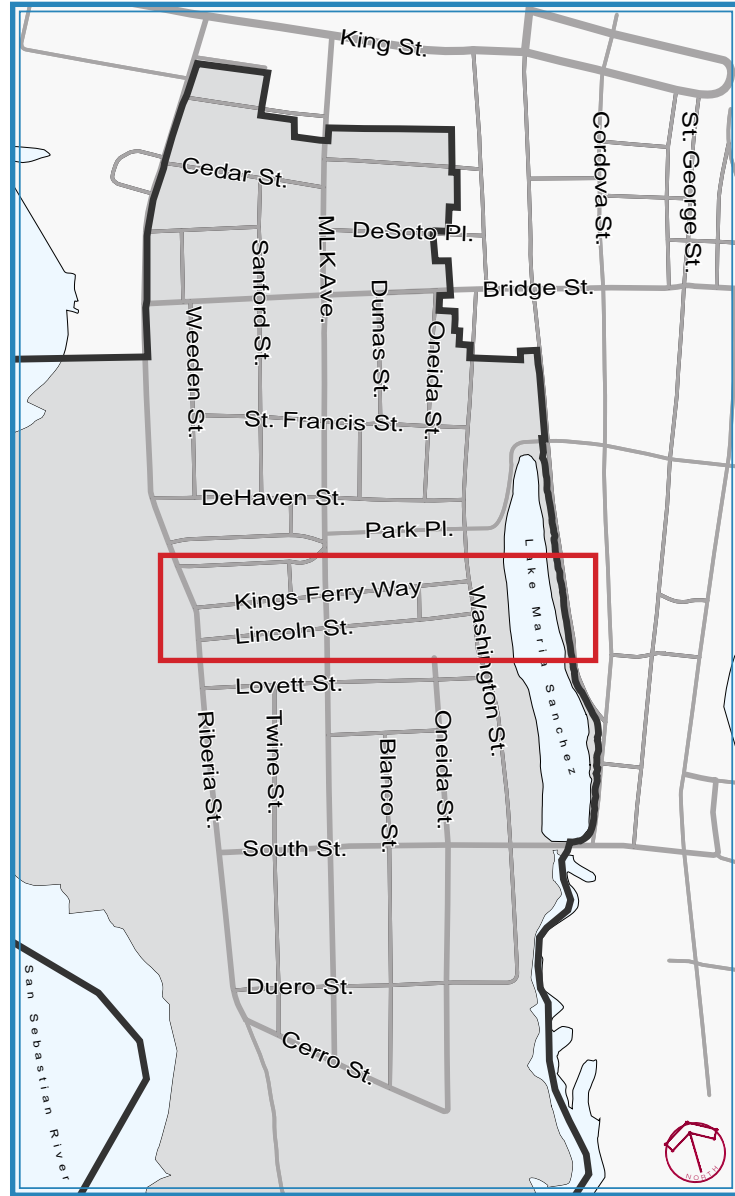


Good/continuous sidewalk along both sides of MLK Ave. with minor obstructions.



LINCOLNVILLE COMMUNITY REDEVELOPMENT AREA

STREETSCAPE SURVEY & ANALYSIS



MAP KEY

- LCRA BOUNDARY**
- EXISTING SIDEWALK CONDITION**
 - GOOD (NEW AND / OR FREE OF CRACKS)
 - FAIR (SLIGHTLY CRACKED / DAMAGED, POTENTIALLY NON-ADA ACCESSIBLE)
 - BAD (HEAVILY CRACKED / MISSING SECTIONS, NON-ADA ACCESSIBLE)
- EXISTING SIDEWALK WIDTH (IN FEET)**
 - 4'
 - 6'
- STREET LIGHT
- ONE-WAY TRAFFIC FLOW
- TREE (IN ROW / CONFLICT WITH SIDEWALK)



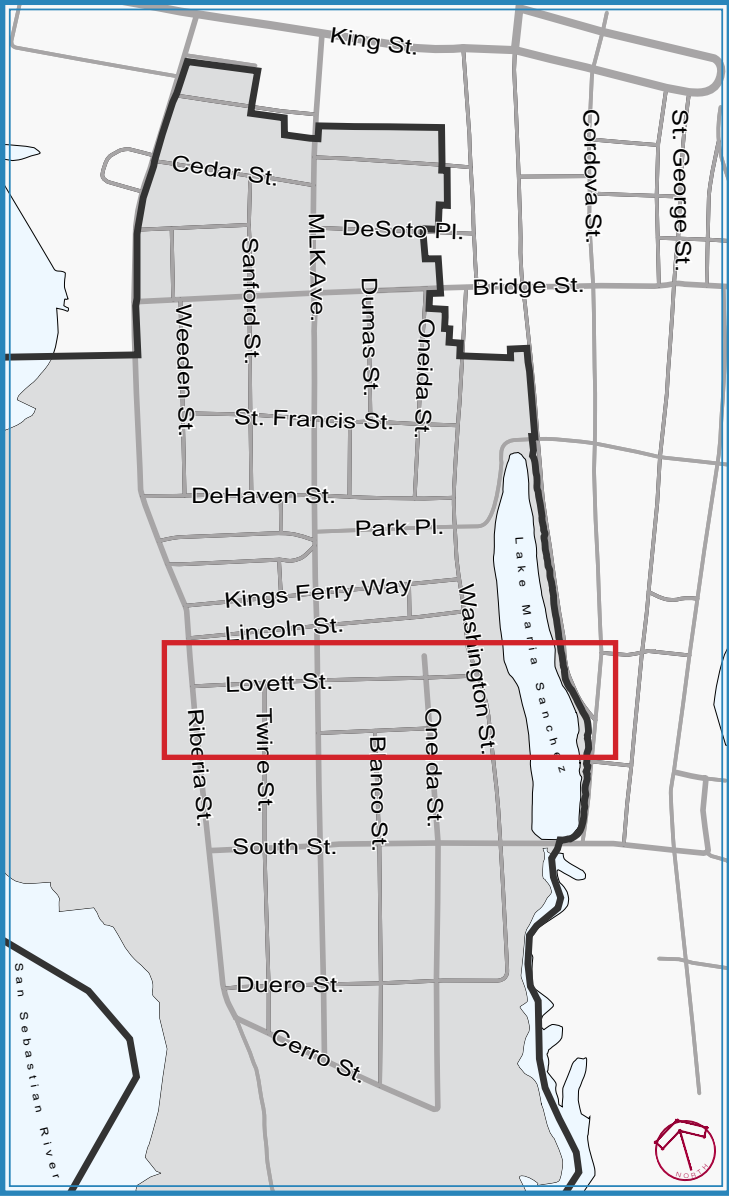
Existing utilities conflicting with sidewalk.







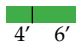

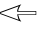

Large existing oak trees would be in conflict with future construction.

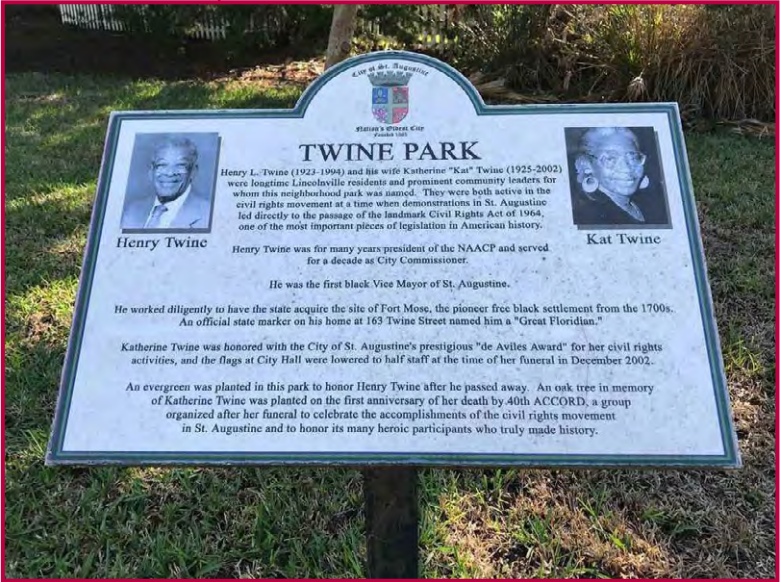


Analysis
Damaged sidewalk and utility conflict.



MAP KEY

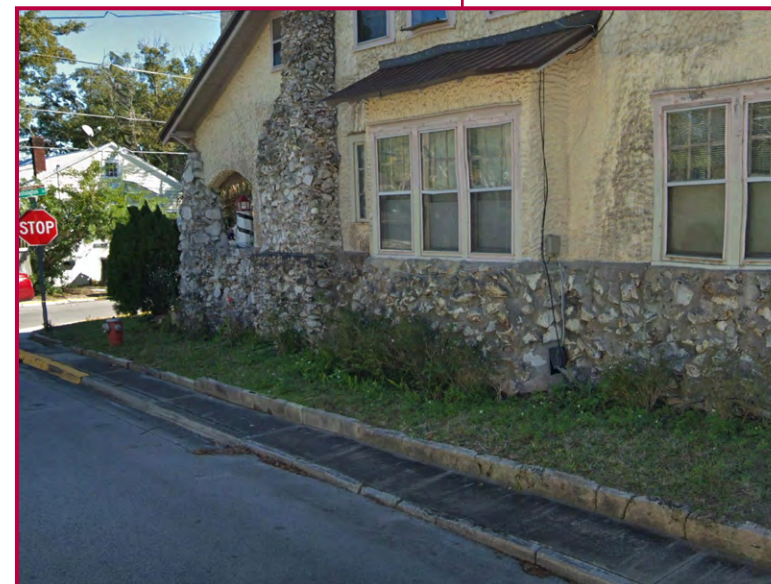
-  LCRA BOUNDARY
- EXISTING SIDEWALK CONDITION
 -  GOOD (NEW AND / OR FREE OF CRACKS)
 -  FAIR (SLIGHTLY CRACKED / DAMAGED, POTENTIALLY NON-ADA ACCESSIBLE)
 -  BAD (HEAVILY CRACKED / MISSING SECTIONS, NON-ADA ACCESSIBLE)
- EXISTING SIDEWALK WIDTH (IN FEET)
 -  4' 6'
-  STREET LIGHT
-  ONE-WAY TRAFFIC FLOW
-  TREE (IN ROW / CONFLICT WITH SIDEWALK)



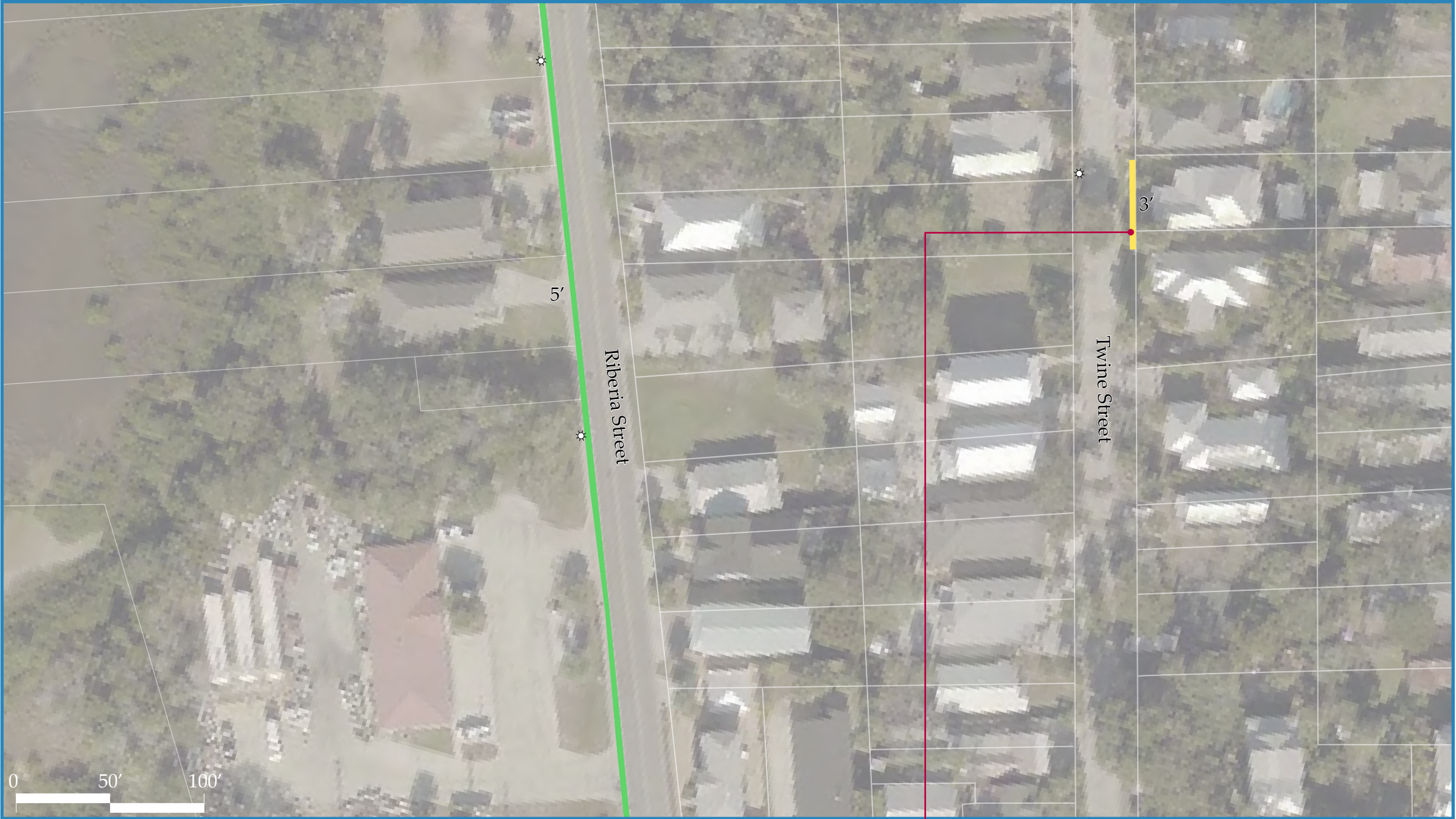
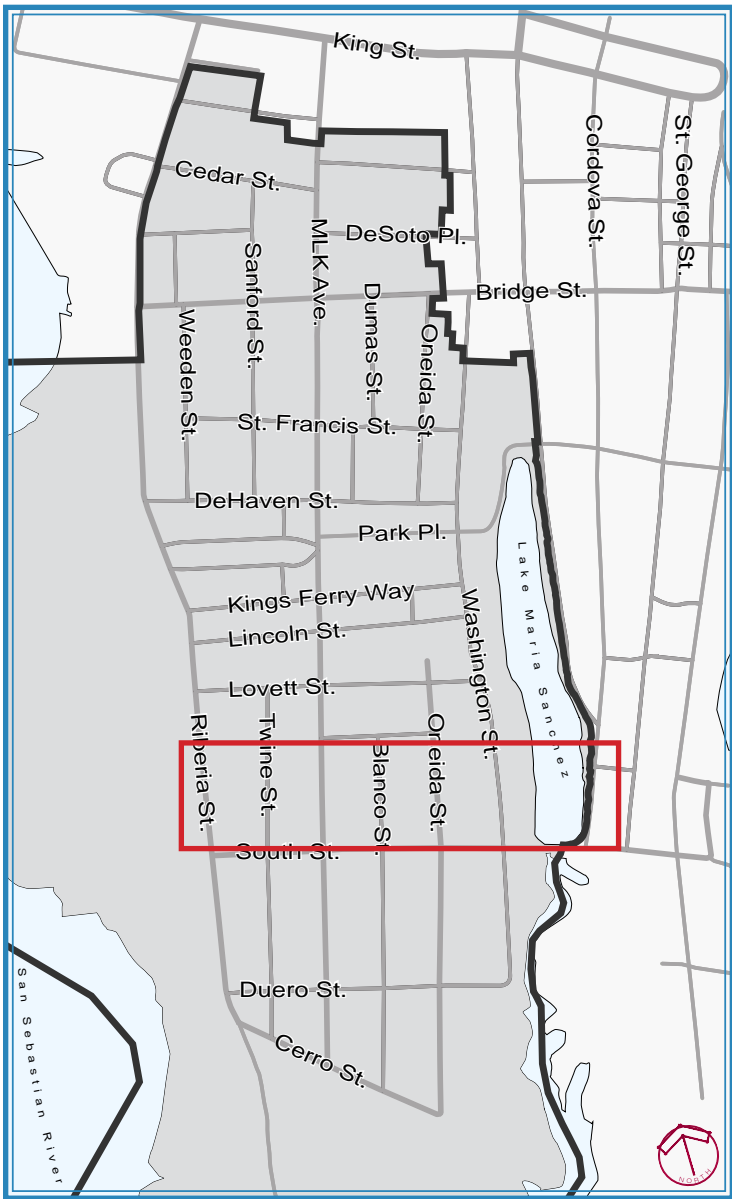
No sidewalk connection/accessible route to Twine Park.









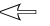

Non-ADA accessible transition.



Non-ADA accessible section flanked by sections of good sidewalk.

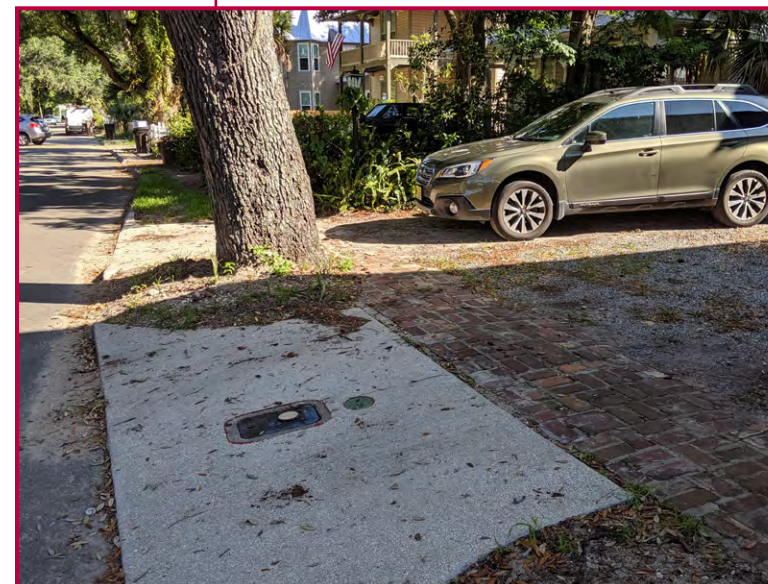


MAP KEY

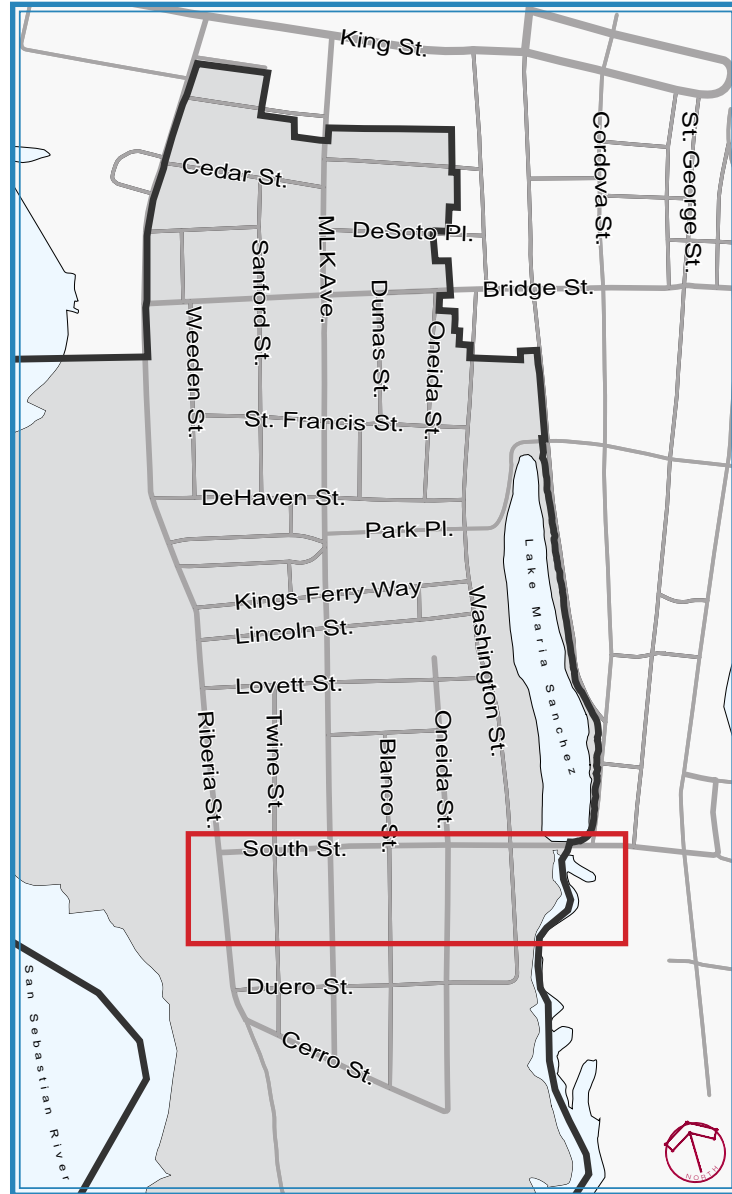
-  LCRA BOUNDARY
- EXISTING SIDEWALK CONDITION
 -  GOOD (NEW AND / OR FREE OF CRACKS)
 -  FAIR (SLIGHTLY CRACKED / DAMAGED, POTENTIALLY NON-ADA ACCESSIBLE)
 -  BAD (HEAVILY CRACKED / MISSING SECTIONS, NON-ADA ACCESSIBLE)
- EXISTING SIDEWALK WIDTH (IN FEET)
 -  4' 6'
-  STREET LIGHT
-  ONE-WAY TRAFFIC FLOW
-  TREE (IN ROW / CONFLICT WITH SIDEWALK)



Existing utilities would be in conflict with future sidewalk construction.



Large existing oak trees would be in conflict with future construction.



MAP KEY

- LCRA BOUNDARY
- EXISTING SIDEWALK CONDITION
 - GOOD (NEW AND / OR FREE OF CRACKS)
 - FAIR (SLIGHTLY CRACKED / DAMAGED, POTENTIALLY NON-ADA ACCESSIBLE)
 - BAD (HEAVILY CRACKED / MISSING SECTIONS, NON-ADA ACCESSIBLE)
- EXISTING SIDEWALK WIDTH (IN FEET)
 - 4' 6'
- STREET LIGHT
- ONE-WAY TRAFFIC FLOW
- TREE (IN ROW / CONFLICT WITH SIDEWALK)



Existing on-street pedestrian path. East sections of South Street featuring quality, off-street sidewalk system.

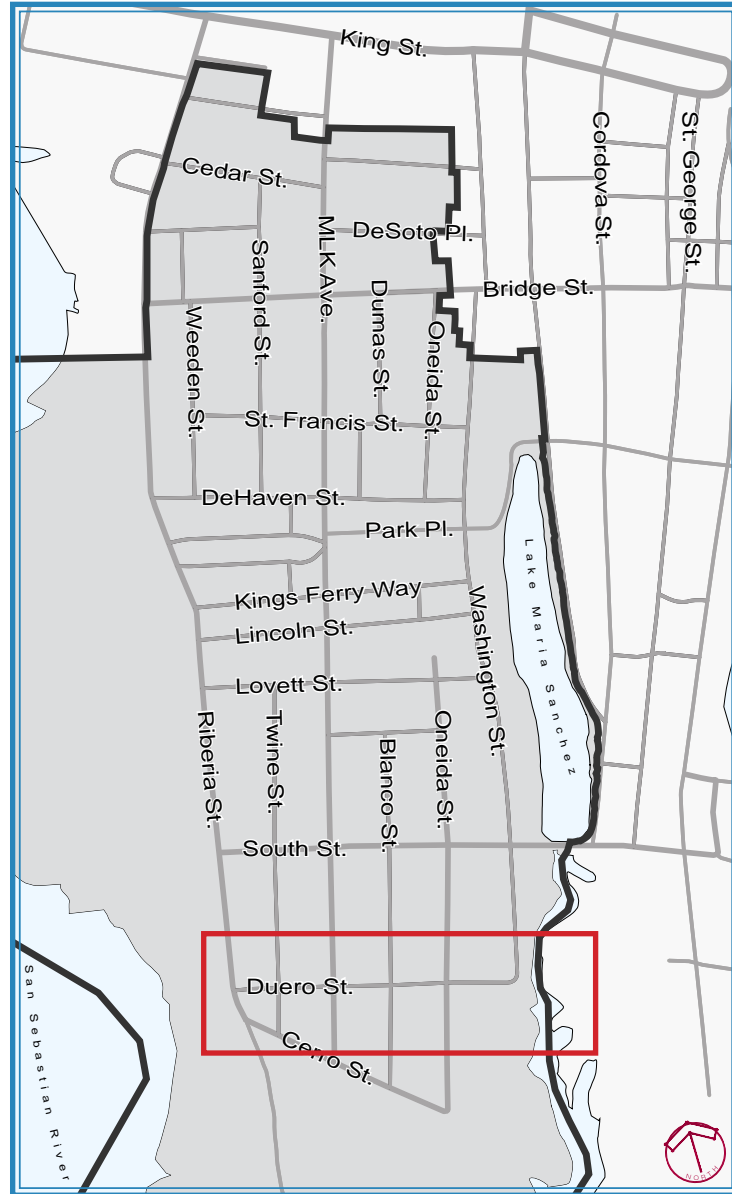


Existing slate sidewalk has broken/missing sections. Non-ADA accessible.



Existing on-street pedestrian path. West sections of South Street featuring quality, off-street sidewalk system.





MAP KEY

- LCRA BOUNDARY**
- EXISTING SIDEWALK CONDITION**
 - GOOD (NEW AND / OR FREE OF CRACKS)
 - FAIR (SLIGHTLY CRACKED / DAMAGED, POTENTIALLY NON-ADA ACCESSIBLE)
 - BAD (HEAVILY CRACKED / MISSING SECTIONS, NON-ADA ACCESSIBLE)
- EXISTING SIDEWALK WIDTH (IN FEET)**
 - 4'
 - 6'
- STREET LIGHT
- ONE-WAY TRAFFIC FLOW
- TREE (IN ROW / CONFLICT WITH SIDEWALK)

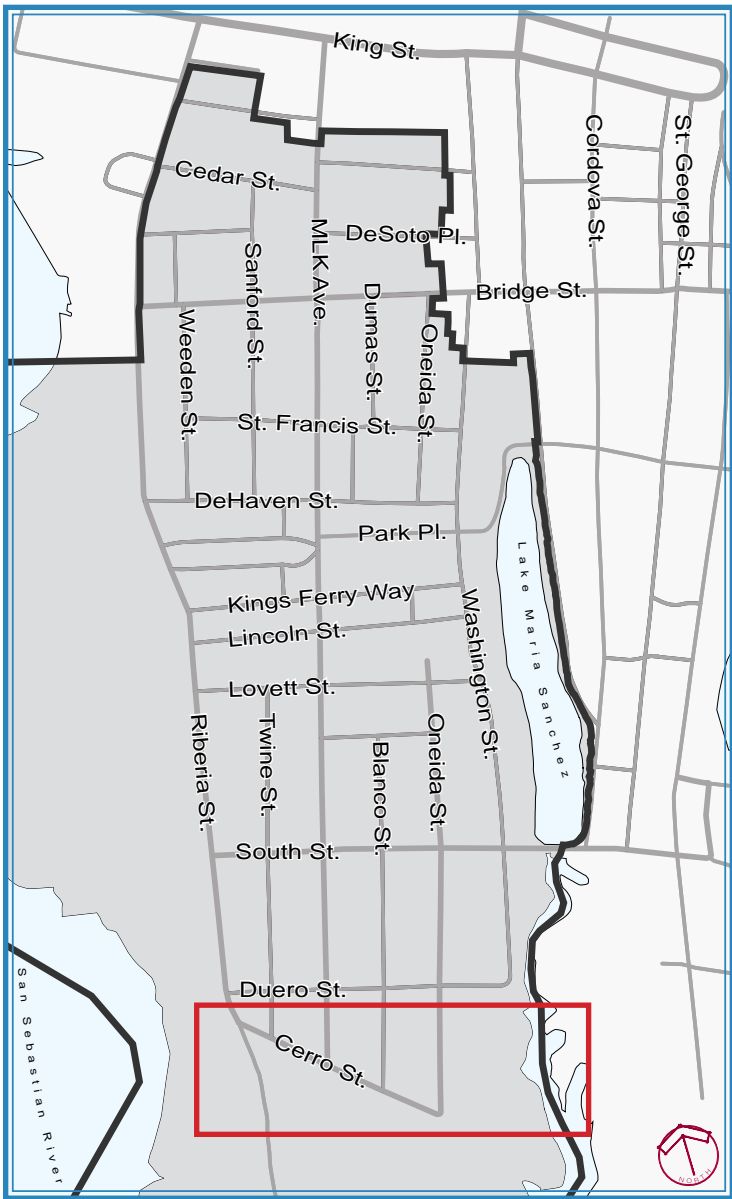


Broken/missing sections within a continuous section of good sidewalk.



Damaged pavers within a good section of sidewalk.





Connection to the Willie Galimore Recreation Center from Cerro St. is broken/missing asphalt.



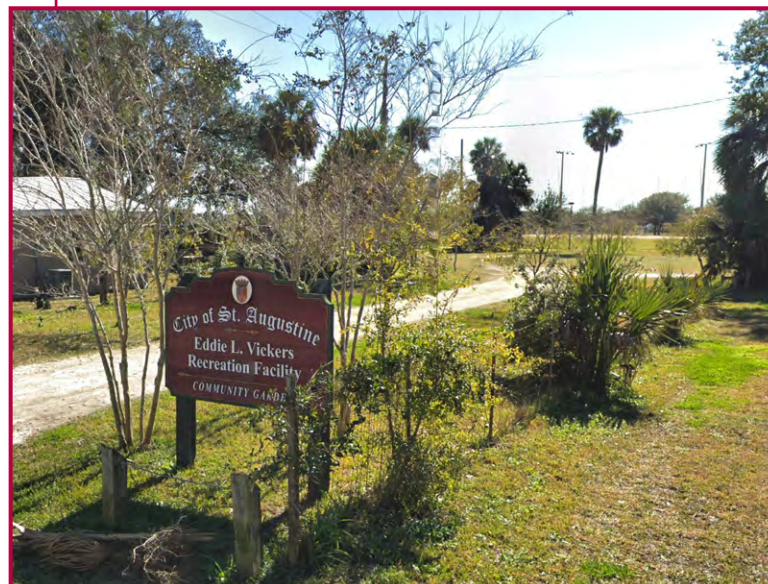
Crosswalk at Riberia Street to Willie Galimore Community Center.

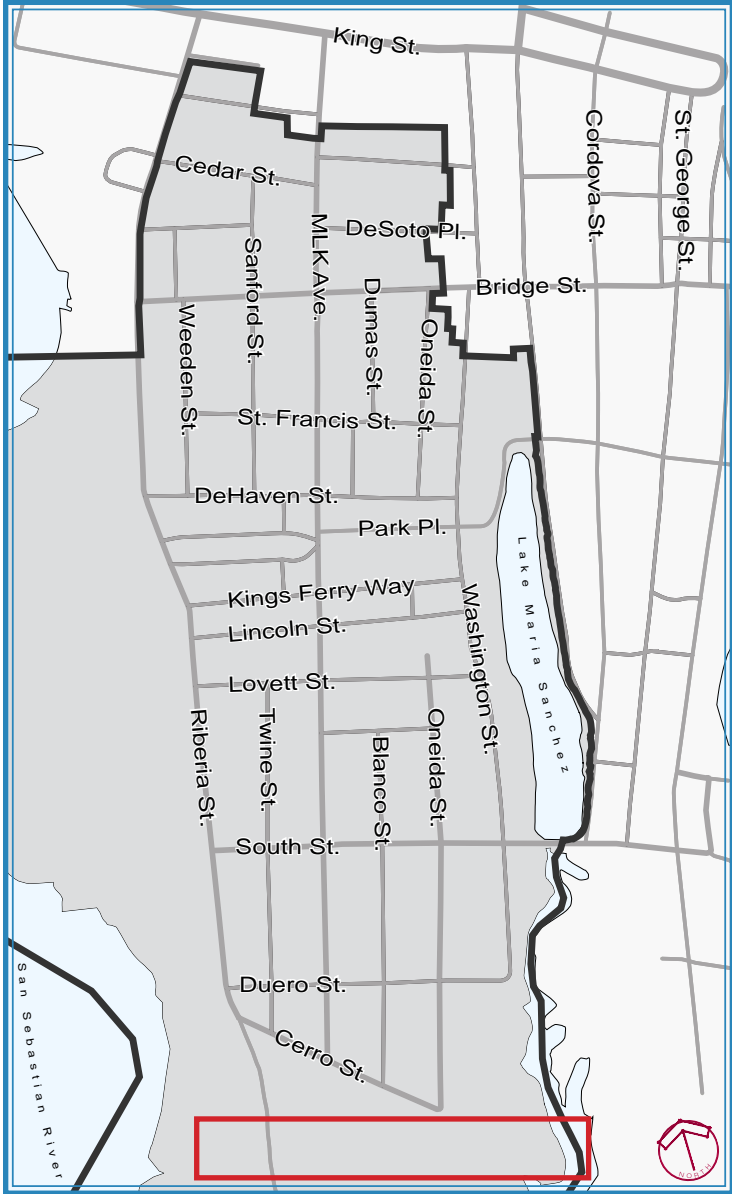
MAP KEY

- LCRA BOUNDARY
- EXISTING SIDEWALK CONDITION
 - GOOD (NEW AND / OR FREE OF CRACKS)
 - FAIR (SLIGHTLY CRACKED / DAMAGED, POTENTIALLY NON-ADA ACCESSIBLE)
 - BAD (HEAVILY CRACKED / MISSING SECTIONS, NON-ADA ACCESSIBLE)
- EXISTING SIDEWALK WIDTH (IN FEET)
 - 4'
 - 6'
- STREET LIGHT
- ONE-WAY TRAFFIC FLOW
- TREE (IN ROW / CONFLICT WITH SIDEWALK)



Unpaved entrance to Eddie L. Vickers Recreation Facility/Community Gardens.



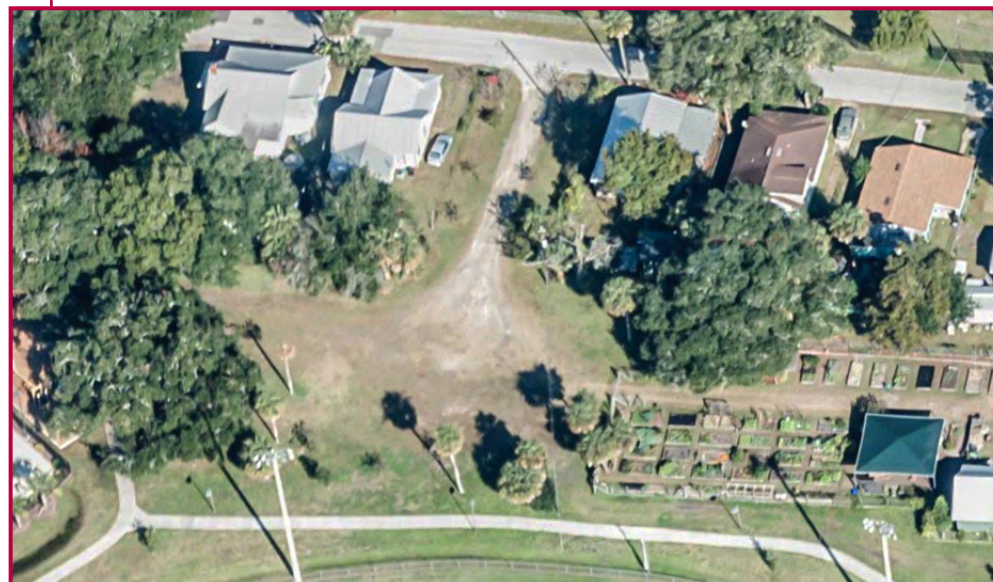


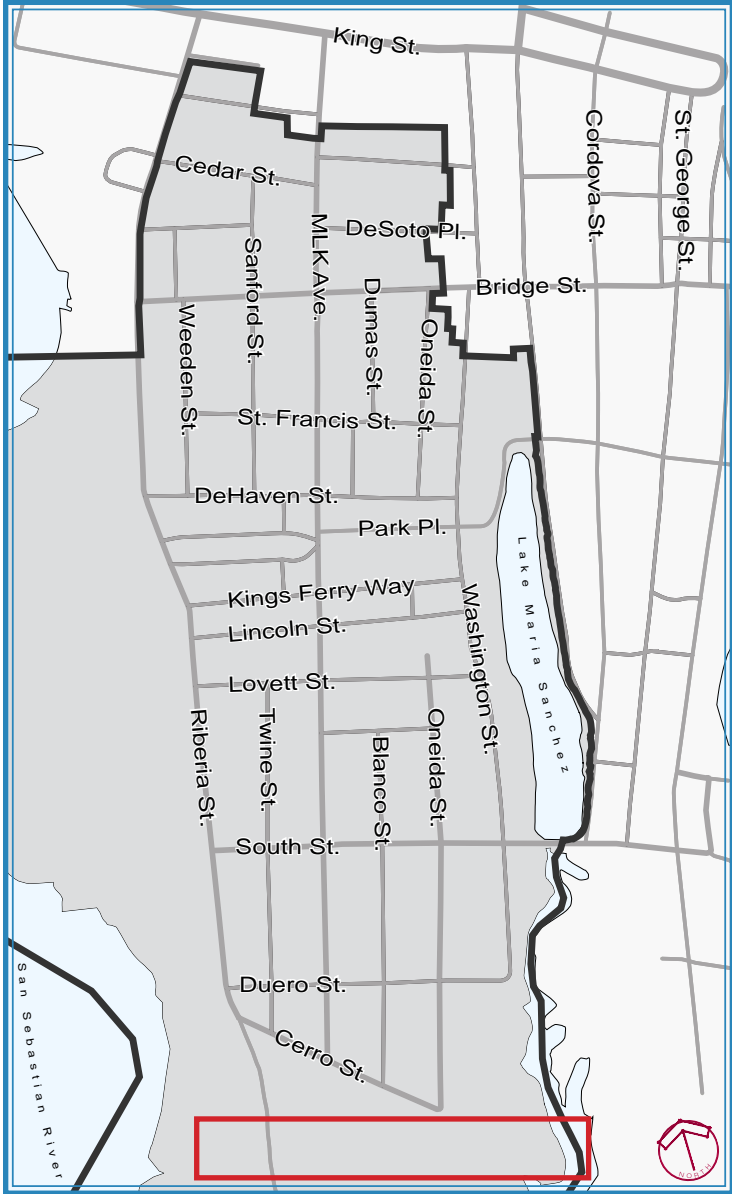
MAP KEY

- LCRA BOUNDARY
- EXISTING SIDEWALK CONDITION
 - GOOD (NEW AND / OR FREE OF CRACKS)
 - FAIR (SLIGHTLY CRACKED / DAMAGED, POTENTIALLY NON-ADA ACCESSIBLE)
 - BAD (HEAVILY CRACKED / MISSING SECTIONS, NON-ADA ACCESSIBLE)
- EXISTING SIDEWALK WIDTH (IN FEET)
 - 4'
 - 6'
- STREET LIGHT
- ONE-WAY TRAFFIC FLOW
- TREE (IN ROW / CONFLICT WITH SIDEWALK)



No accessible path to the Community Gardens, playground and parking area.



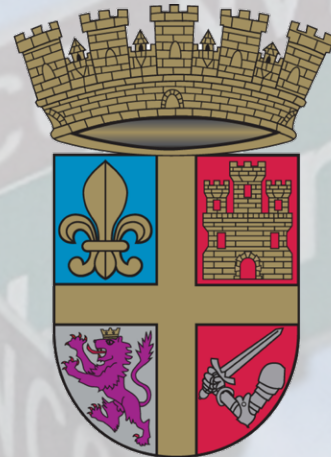


MAP KEY

- LCRA BOUNDARY
- EXISTING SIDEWALK CONDITION
 - GOOD (NEW AND / OR FREE OF CRACKS)
 - FAIR (SLIGHTLY CRACKED / DAMAGED, POTENTIALLY NON-ADA ACCESSIBLE)
 - BAD (HEAVILY CRACKED / MISSING SECTIONS, NON-ADA ACCESSIBLE)
- EXISTING SIDEWALK WIDTH (IN FEET)
 - 4'
 - 6'
- STREET LIGHT
- ONE-WAY TRAFFIC FLOW
- TREE (IN ROW / CONFLICT WITH SIDEWALK)



Crosswalk from Eddie L. Vickers Recreation Facility to Freedom Park.



CITY OF
ST. AUGUSTINETM
EST. 1565